

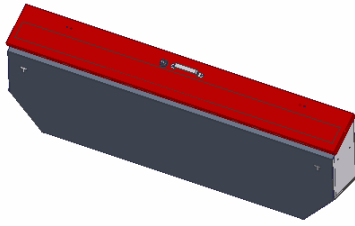


# INSTALLATION INSTRUCTIONS

## FRONT TRUCK-BED STORAGE BOX #117 & #152

Please read and fill out the enclosed warranty registration card to activate your warranty.

### SHIPMENT CONTENTS



TUFFY STORAGE BOX



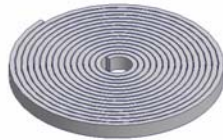
(12) 5/16" WASHERS



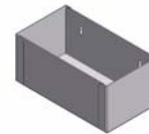
(6) 5/16 x 11/4" BOLTS



(6) 5/16 NYLOCK NUTS



RUBBER SEAL



TRAY

### **TOOLS NEEDED**

- Electric drill
- 3/8" Drill bit
- Marker or pencil
- 1/2" Socket and ratchet
- 1/2" Wrench
- Silicone sealant (Recommended)

### **PLEASE READ ALL INSTRUCTIONS THOROUGHLY BEFORE STARTING INSTALLATION.**

#### **Pre-installation notes**

1. Since most truck beds can vary between models and brands the Tuffy storage box is designed with a wide variety of mounting options. Check the fit in your particular vehicle before starting the installation process.
2. Install the rubber seal on the lid and check the lock operation. (SEE FIGURE 1)
3. Place the box in the desired mounting position in the truck-bed. **Make sure the lid will clear the lip on the front of the truck bed when opening and closing**
4. Mark the truck bed floor through the (4) holes in the bottom of the storage box making sure the box is upright. (SEE FIGURE 2)

#### ***WARNING!***

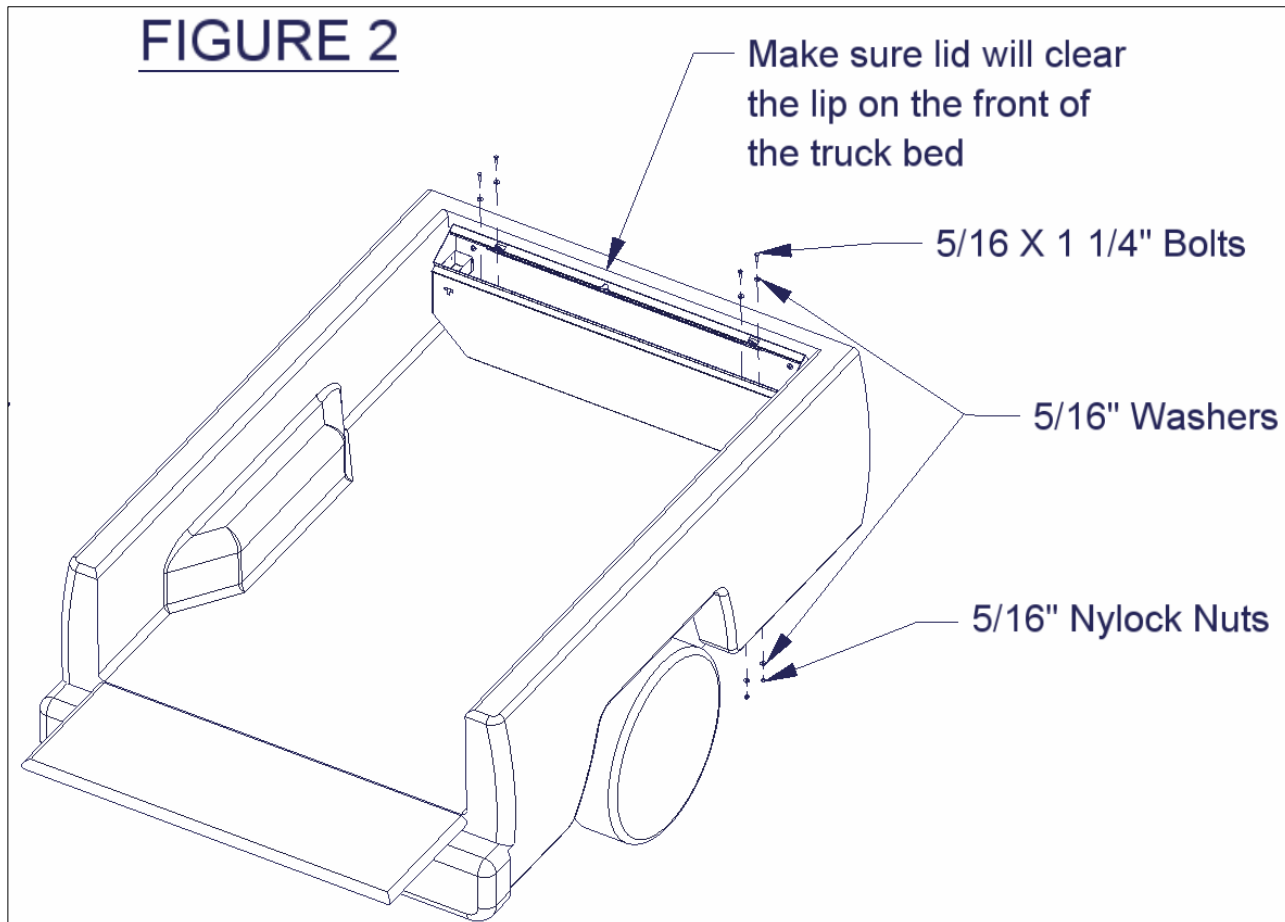
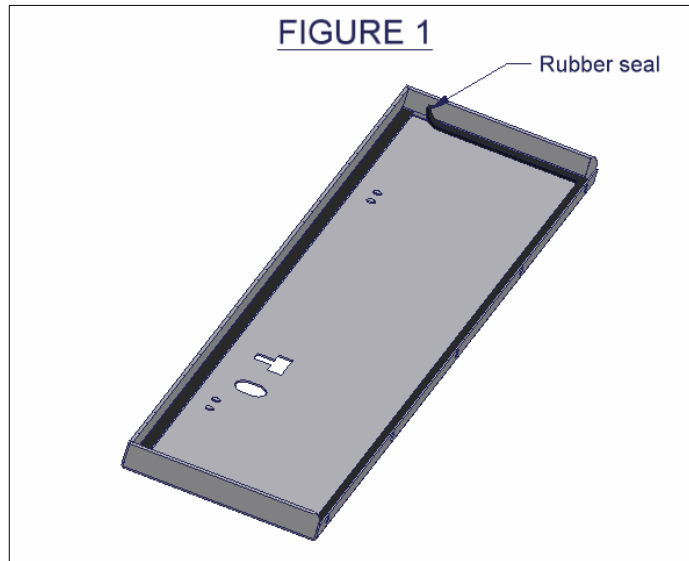
**Make sure that there is nothing under the vehicle that will be damaged by the drill bit when drilling.**

5. Drill out the (4) marked spots on the floor of the truck bed with a 3/8" drill bit. (SEE FIGURE 2)
6. It is recommended to use silicone sealant in any holes drilled in the vehicle to prevent rusting.
7. Fasten the box down with (4) 5/16 x 1 1/4" bolts, (4) 5/16" washers, and (8) 5/16" nylock nuts. For security purposes at least (1) bolt should be inserted from the underside of the truck bed. (SEE FIGURE 2) The additional (2) Bolts, nuts, & washers can be optionally used to stabilize the top of the box against the bed wall if desired. Drill corresponding holes in the bed to the holes in the back side of the box and fasten.
8. Check the lock operation.

# ATTENTION:

## **FREQUENT LUBRICATION IS NECESSARY ON THE LOCKING SYSTEM**

The pushbutton lock contains an "O" ring seal to protect the interior from dust and water. If this mechanism is not lubricated regularly it will become difficult to operate and it may not return to its home position preventing the key from operating the lock. If this happens simply pull up on the pushbutton to manually bring it back to its home position. Lubricate the pushbutton with a light lubricant such as silicone spray. The pushbutton may have to be periodically disassembled and cleaned.



Call (970) 564-1762 for Technical Support

Page 2 of 2 - 1/28/2008 – Rev122006