



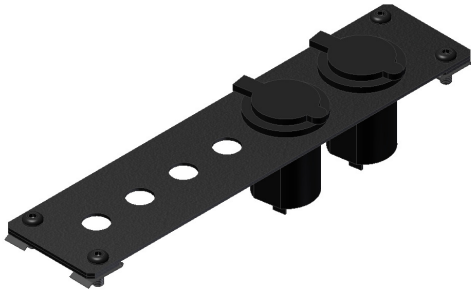
Command Center Modular Console Line

ITEM # - 219-__ - __ Accessory Face Plates

See TuffyProducts.com for all console applications and related products

Please read and fill out the enclosed warranty registration card to activate your warranty.

PARTS CHECKLIST



#1 - (1) 219-__ - __ ACCESSORY FACEPLATE

#2 - (2) 195-__ - __ SPACERS

(Note: Your face plate may differ from the one shown above depending on number and type of accessories to be mounted. One or more power ports may be included, as well as one or more switches. If a custom faceplate was ordered, the cutouts will match the accessories that you provided. If a blank faceplate was ordered, there will be no included accessories or cutouts.)

SHIPPING PACKAGE CHECKLIST



#3 - (4) 10-32X1/2 HEX HEAD SCREW



#4 - (4) 10-32 U-NUTS

TOOLS NEEDED

- 3mm hex key or 3mm bit and cordless driver with clutch

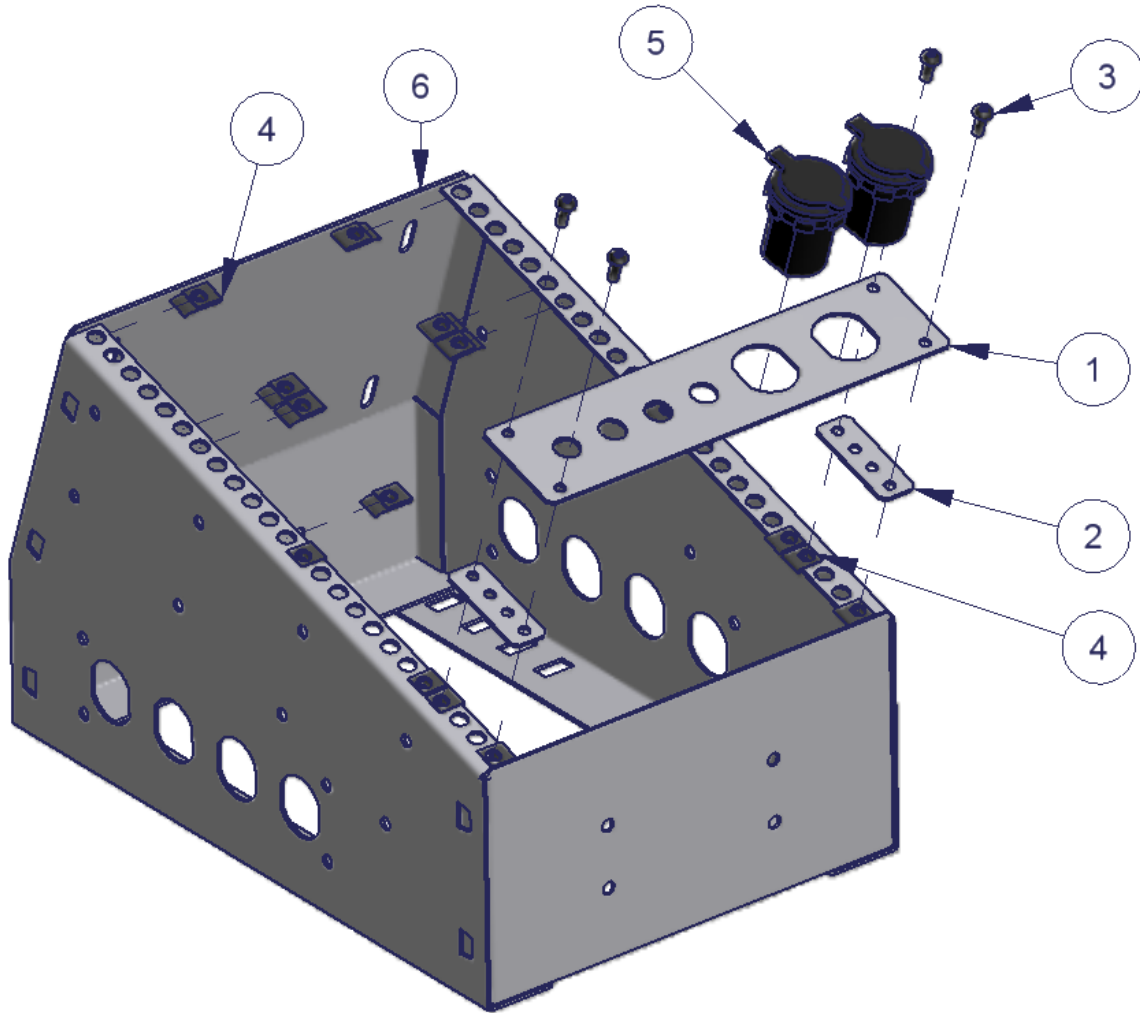
ASSEMBLY INSTRUCTIONS:

PLEASE READ ALL INSTRUCTIONS THOROUGHLY BEFORE STARTING INSTALLATION.

1. The 219 Accessory Faceplate kits require a Tuffy Security Products Communications Console to mount to. Please see www.tuffyproducts.com for the complete Command Center Console line.
2. IMPORTANT! Make sure the vehicle is parked on a flat surface, placed in park, and the emergency brake is activated.

3. Install the snap fit U-Nuts (#4) in the appropriate locations so that they line up at each corner of the faceplate as shown in Figure 1.
4. If applicable, install the Power Ports (#5) and/or any additional switches or accessories into the faceplate (#1).
NOTE: It is the responsibility of the installer to wire any electrical accessories properly to ensure that there is no damage to the vehicle's electrical system or to any attached components. Consult an automotive wiring specialist if necessary.
5. Install the accessory faceplate (#1) and spacer plate (#2) onto the Tuffy console using the four cap screws (#3) as shown in Fig. 1. Hand tighten the cap screws until firmly tight **but be careful not to over tighten.**

FIGURE 1



Call (970) 564-1762 for Technical Support