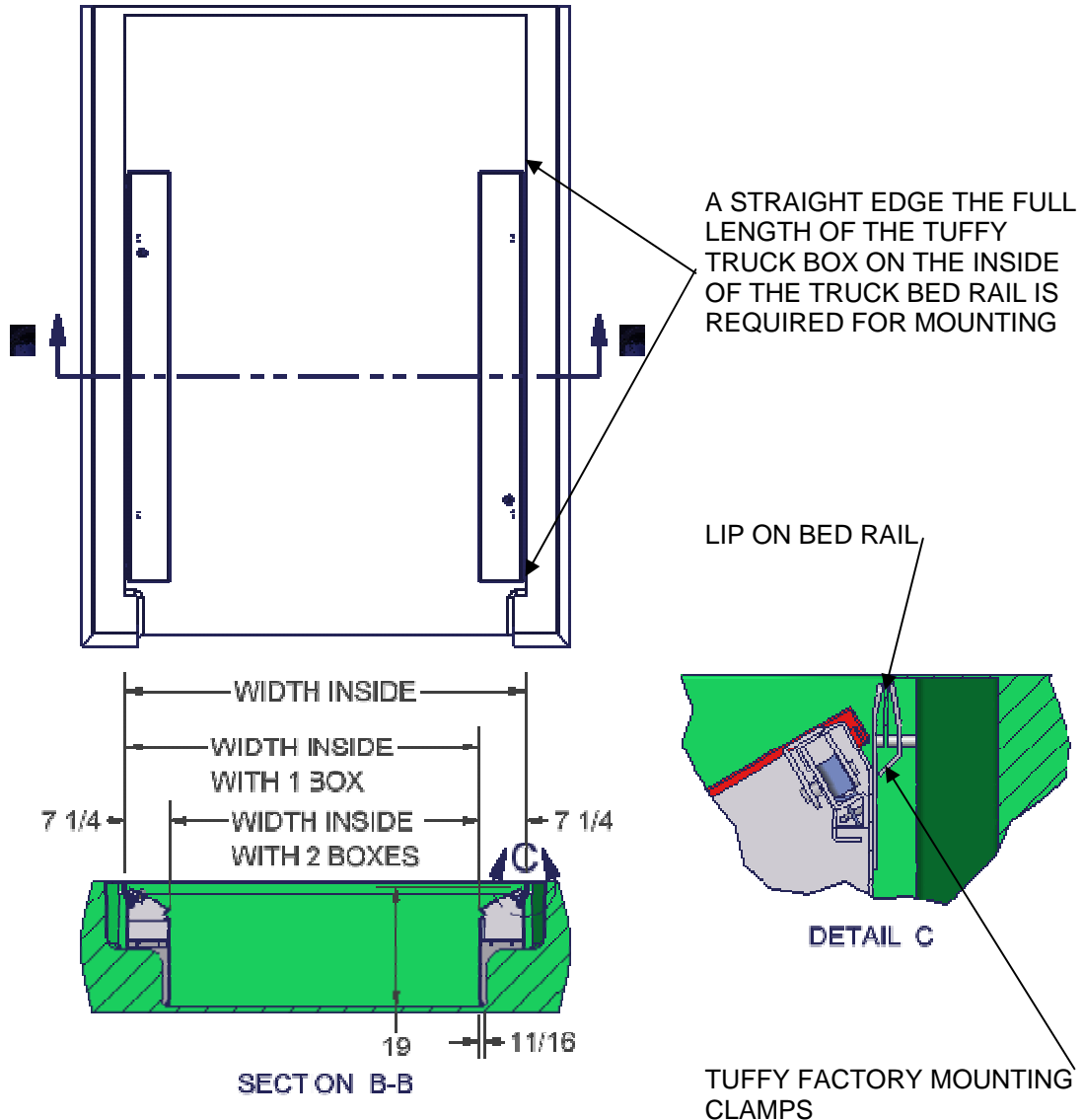


MOUNTING REQUIREMENTS FOR PART# 053 AND #069 TRUCK-BED SIDE WEDGE STORAGE BOX

THIS IS A UNIVERSAL BOX DESIGNED FOR MULTIPLE APPLICATIONS.
DUE TO THE WIDE VARIANCE OF TRUCK BED DESIGNS THE FOLLOWING DRAWING CAN
BE USED IN ASSESSING THE COMPATIBILITY OF THE TUFFY TRUCK BOX WITH YOUR
TRUCK BED.

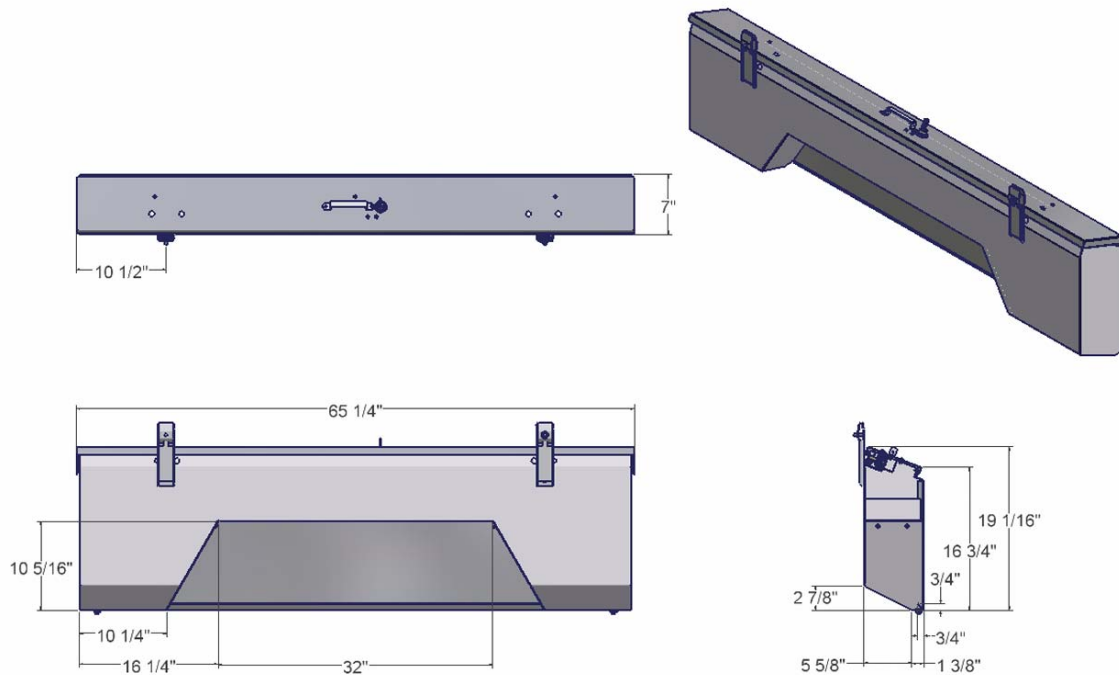


NOTES: THERE NEEDS TO BE ACCESS ROOM FOR A WRENCH BEHIND THE LIP ON THE BED RAIL TO TIGHTEN THE HARDWARE ON THE TUFFY MOUNTING CLAMPS.

FORMULAS:

WIDTH INSIDE WITH 2 BOXES = WIDTH INSIDE - 14 1/2"

WIDTH INSIDE WITH 1 BOX = WIDTH INSIDE - 7 1/4"



KNOWN ISSUES:

Problem: Some drop in truck bed liners (including OEM) cover up the lip needed on the bed rail to use the Tuffy factory mounting hardware.

Possible solution: To use the Tuffy factory mounting hardware a hole could be cut in the liner to access the lip on the under side of the bed rail. (Provided there is a lip under the drop-in bed liner.) The hole would have to be large enough for the Tuffy mounting clamp and wrench access for tightening the Tuffy mounting hardware.

Possible solution: The box could be mounted directly to the inside of the truck rail with $\frac{1}{4}$ " self drilling screws (not supplied) provided there is a stout mounting surface available on the inside of the bed rail. This method does not use the Tuffy factory mounting clamps.

Problem: Some truck bed rail designs do not have a lip on the inside of the bed rail to clamp the factory mounting hardware to.

Possible solution: The box could be mounted directly to the inside of the truck rail with $\frac{1}{4}$ " self drilling screws and washers (not supplied) provided there is a stout mounting surface available on the inside of the bed rail. This method does not use the Tuffy factory mounting clamps.